

A WALK PAST CRANFORD'S ARCHITECTURE - SUNNY ACRES

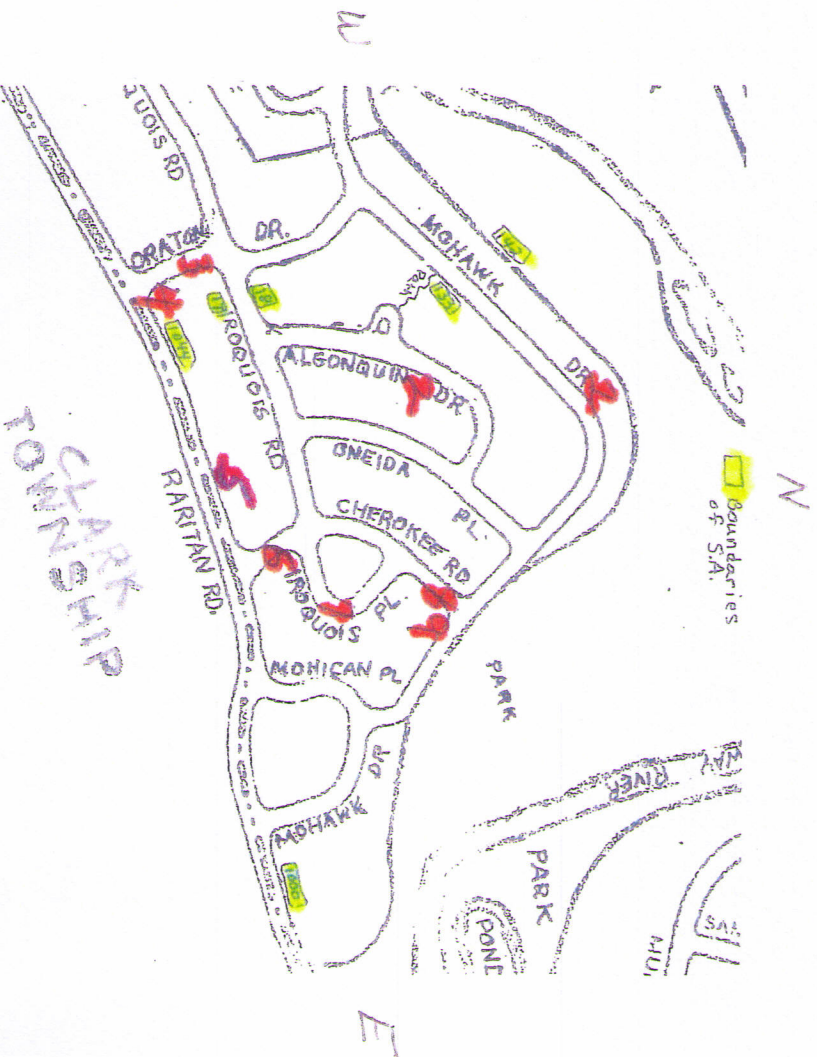
BY THE HISTORIC PRESERVATION ADVISORY BOARD

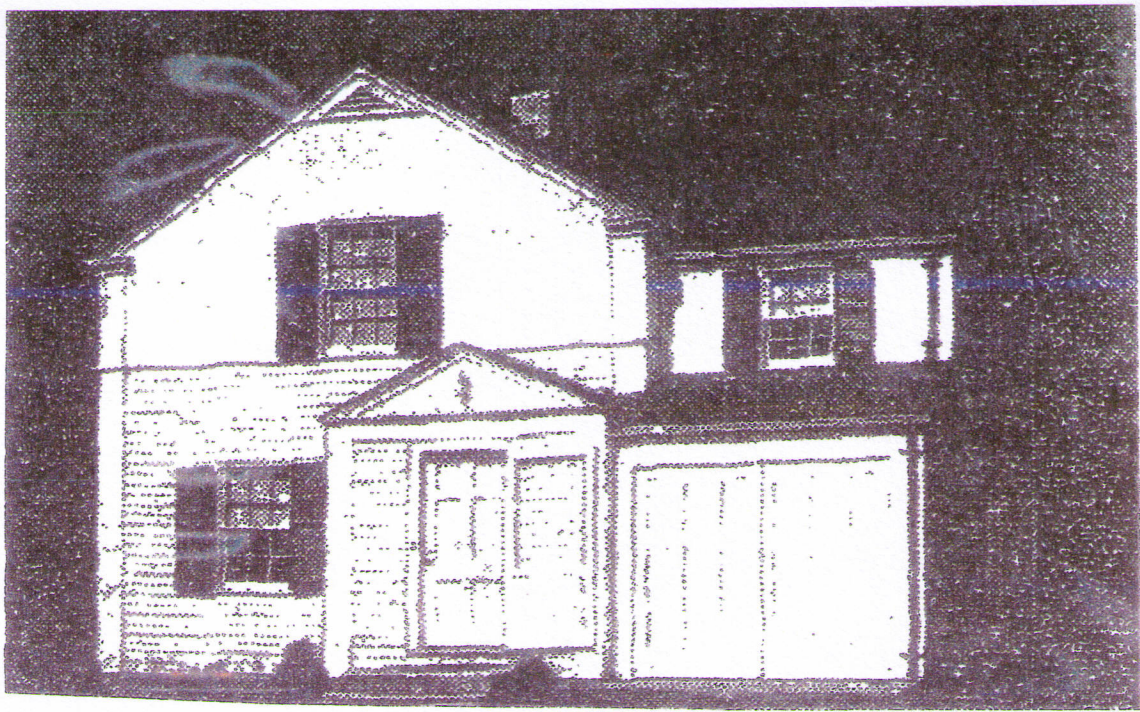
This walking tour takes you past Sunny Acres, a unique community within the Township of Cranford, NJ. It is a development of 172 homes, laid out between the curves of the Rahway River and Raritan Road. It was built in 1940-42 by Sears Roebuck and Company as an experimental project using mass production methods. The majority of the homes are in the Cape Cod style. Randolph Evans, a successful architect of single-family homes and involved with the "Small Homes Movement" of the day, was one of the architects. The other was Albert E. Olson. To avoid a "cookie cutter" appearance, the architects rotated the floor plans and put the garage in a different position, thereby giving each house a different appearance from the street.

Enjoy your visit through Sunny Acres and the Sears Homes.

LOCATION PICTURED HOMES

- | | |
|----|--------------------|
| #1 | 124 MOHAWK DRIVE |
| #2 | 16 ALGONQUIN DRIVE |
| #3 | 17 IROQUOIS ROAD |
| #4 | 18 IROQUOIS ROAD |
| #5 | 1026 RARITAN ROAD |
| #6 | 4 CHEROKEE ROAD |
| #7 | 6 IROQUOIS PLACE |
| #8 | 25 MOHAWK DRIVE |
| #9 | 23 MOHAWK DRIVE |

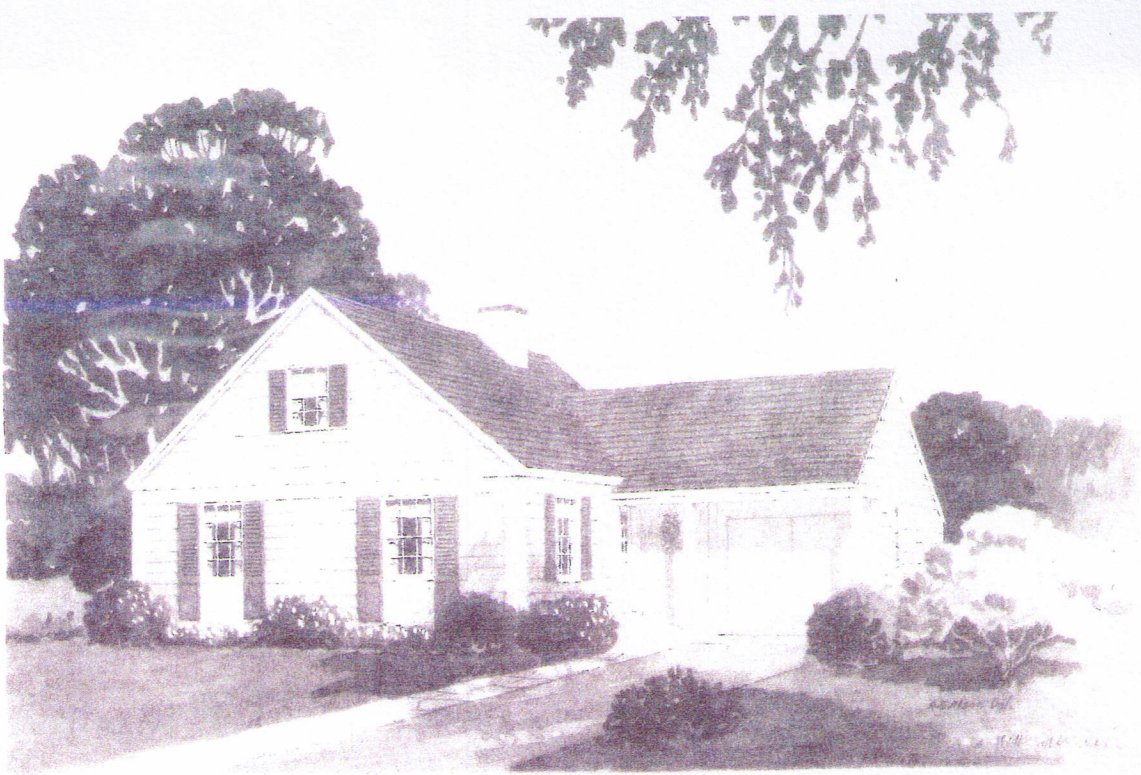




3RD GROUP PHOTO COLONIAL STYLE



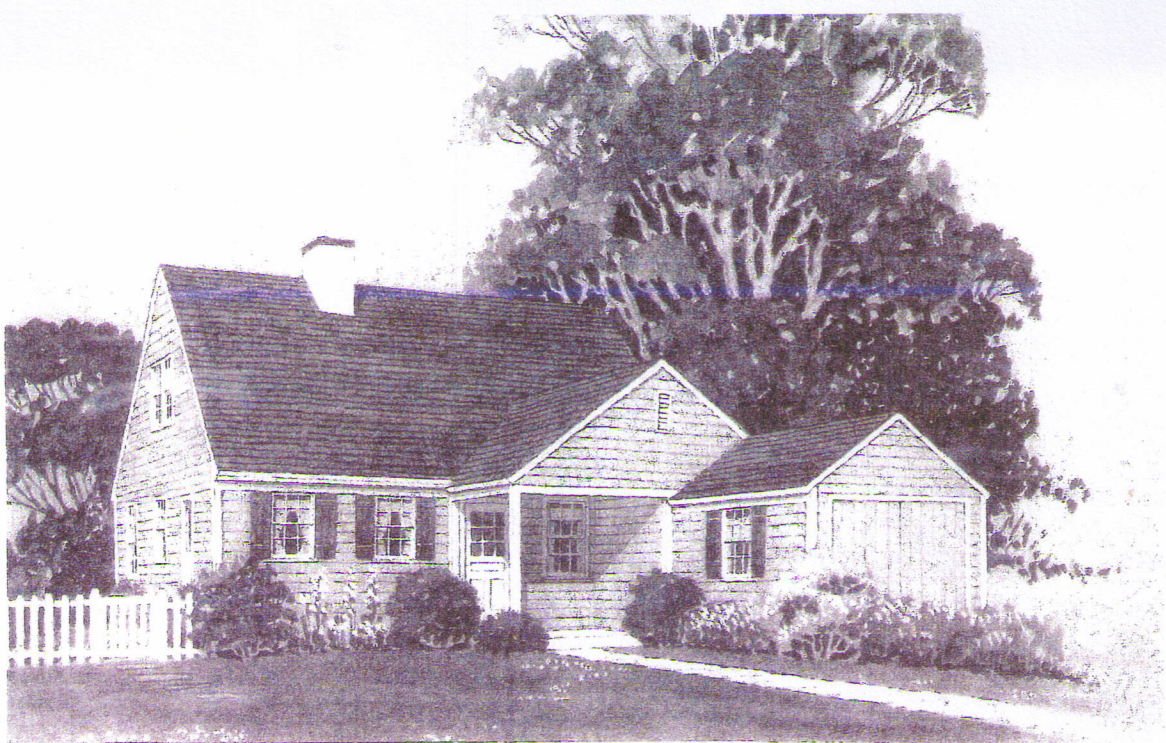
124 MOHAWK DR.



1940 DRAWING BY ARCHITECT HOUSE PLAN NO.2



16 ALGONQUIN DR.



1940 DRAWING BY ARCHITECT HOUSE PLAN NO.6



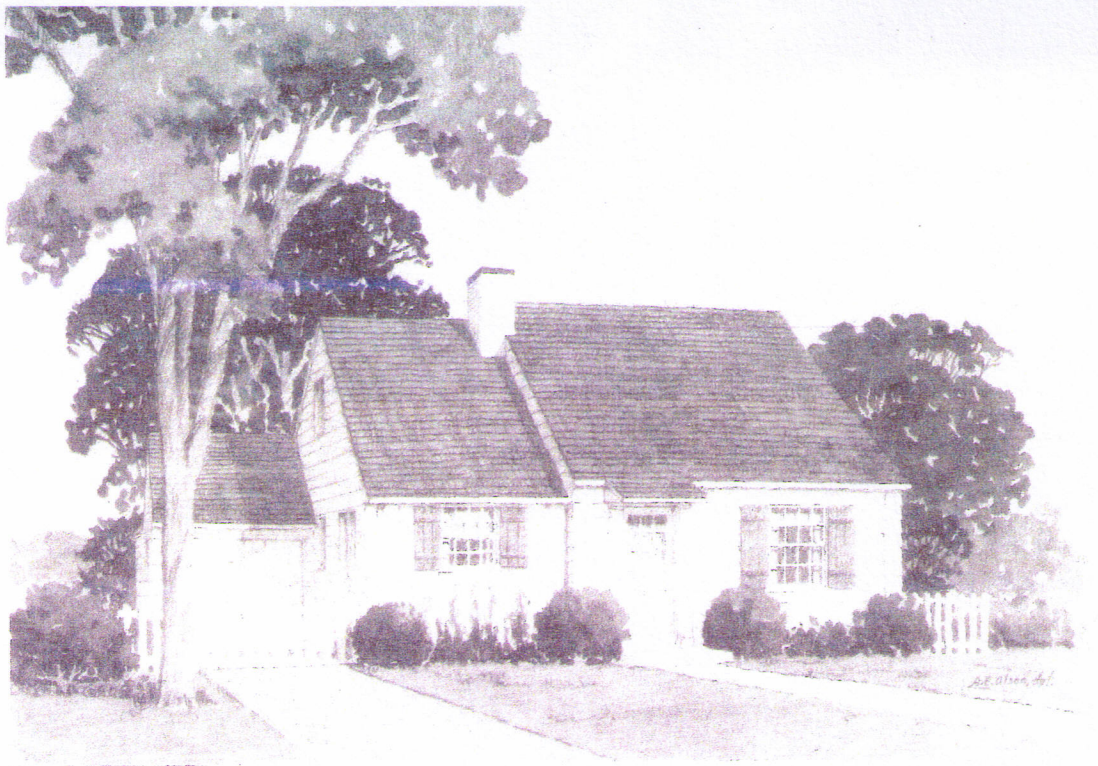
17 IROQUOIS RD.



1940 DRAWING BY ARCHITECT HOUSE PLAN NO.4



18 IROQUOIS RD.



1940 DRAWING BY ARCHITECT HOUSE PLAN NO.1



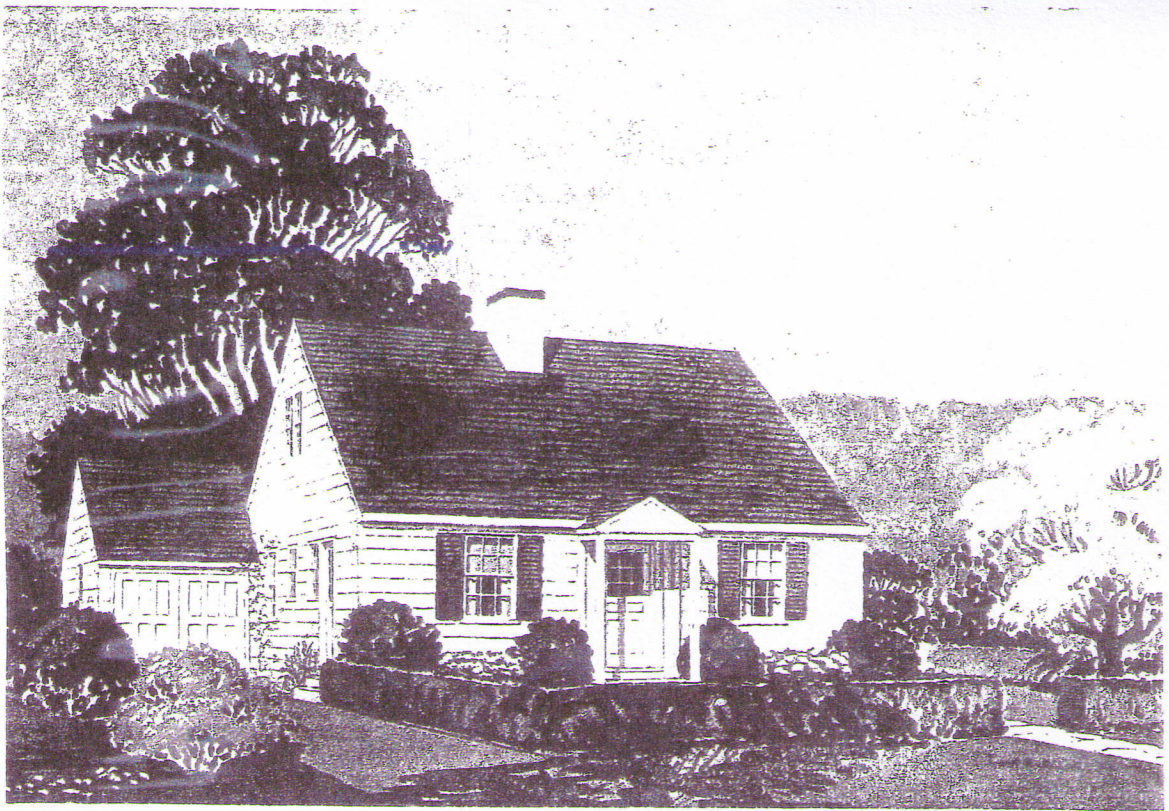
1026 RARITAN RD. OPPOSITE HOUSE PLAN NO.1



1940 DRAWING BY ARCHITECT HOUSE PLAN NO.10



4 CHEROKEE RD.



1940 DRAWING BY ARCHITECT HOUSE PLAN NO.12



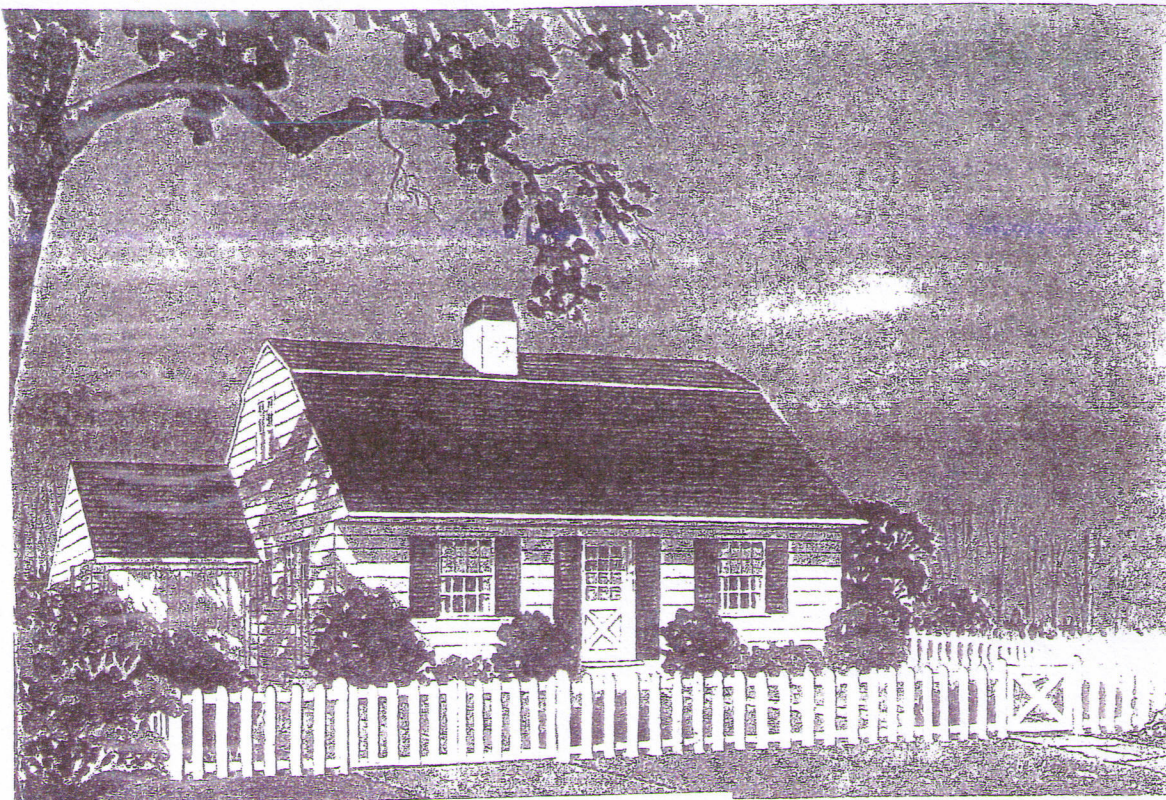
6 IROQUOIS PL.



1940 DRAWING BY ARCHITECT HOUSE PLAN NO.8



25 MOHAWK DR.



1940 DRAWING BY ARCHITECT HOUSE PLAN NO.7



23 MOHAWK DR.